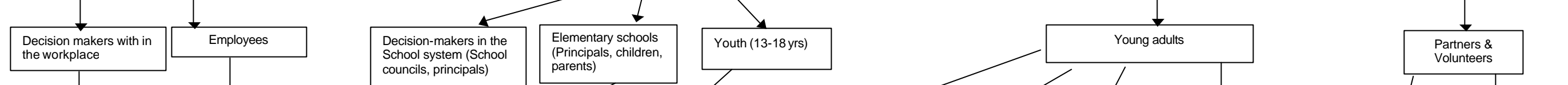


# Health Action Logic Model 2004 - 2007

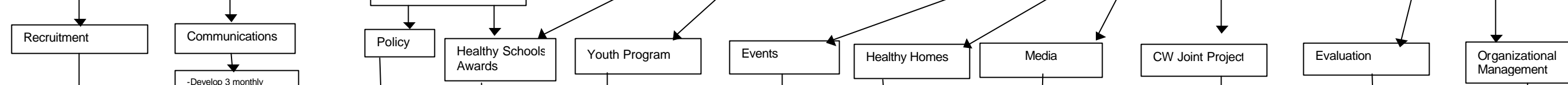
**Strategies**



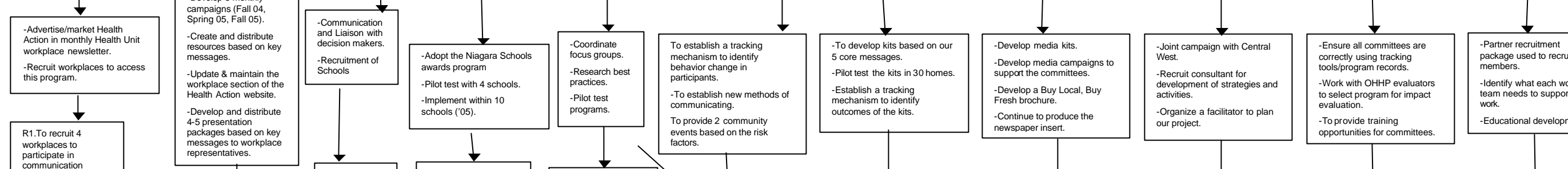
**Intended Populations**



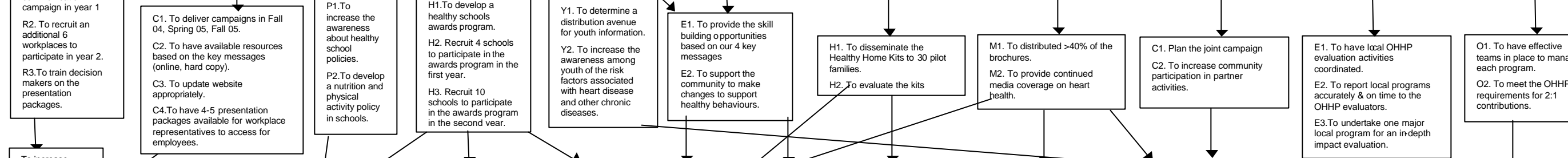
**Programs**



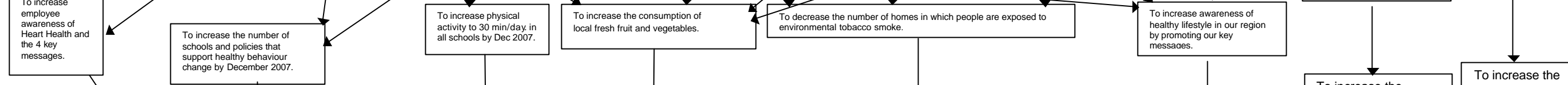
**Activities**



**Programming Objectives**



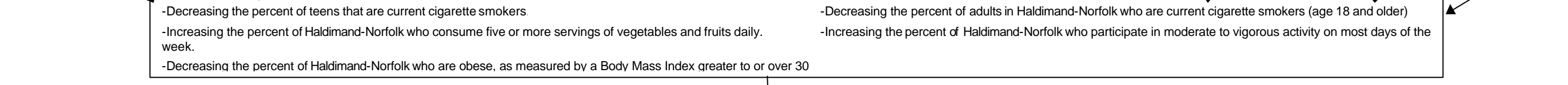
**Environmental Objectives**



**Organizational Capacity Objectives**



**Population Objectives**



**Mission (local)**

Health Action supports & challenges Haldimand & Norfolk to take action against the risk factors associated with heart disease & other chronic disease.

**Vision (local)**

Health Action envisions Haldimand & Norfolk where the prevalence of heart disease & other chronic illnesses is decreased through creating supportive environments & policies around health eating, being active, being smoke-free and managing stress.

**OHHP-TAFHL Goal**

To Prevent Cardiovascular disease (CVD) and other chronic diseases such as Type-II diabetes, stroke and some forms of cancer.